

## ØS LDV fejl efter overgang til ny Navision Stat SQL Server

(2009.11.08 Egon Nør)

Hvis ØS LDV wizard fejler ved afvikling af scriptet (OES-Plugins\SLS/CheckDimDataType.sql) kan det skyldes, at den databasebruger, der bruges på tværs af de to databaseservere (Typisk READLDV) ikke er korrekt oprettet på Navision Stat SQL Serveren.

Det har i flere tilfælde vist sig, at brugeren findes med samme navn, men blot med henholdsvis små og store bogstaver.

Det kan også være en kombination af dette sammen med en manglende opsætning på Navision Stat SQL Serveren.

Opsætningen på Navision Stat SQL Serveren under  
Start – Programs - Microsoft SQL Server 2005 - Configuration Tools - SQL Server Surface Area Configuration

Vælg: Surface Area Configuration for Features



Microsoft  
**SQL Server 2005**  
Help Protect Your SQL Server

Microsoft  
Windows Server System

### Minimize SQL Server 2005 Surface Area

SQL Server 2005 improves manageability and security by giving administrators more control over the surface area of local and remote instances of SQL Server 2005. With the SQL Server 2005 Surface Area Configuration tools, you can easily:

- Disable unused services and network protocols for remote connections.
- Disable unused features of SQL Server components.

For new installations, use these tools to enable required features, services, and network protocols that are disabled by default. For upgraded instances, use these tools to identify and disable unused features, services, and protocols.

Users with administrative privileges on Microsoft Windows Vista and later versions will no longer have administrative privileges on this SQL Server installation by default. To explicitly add yourself as a SQL Server administrator, click on the below link:

 [Add New Administrator](#)

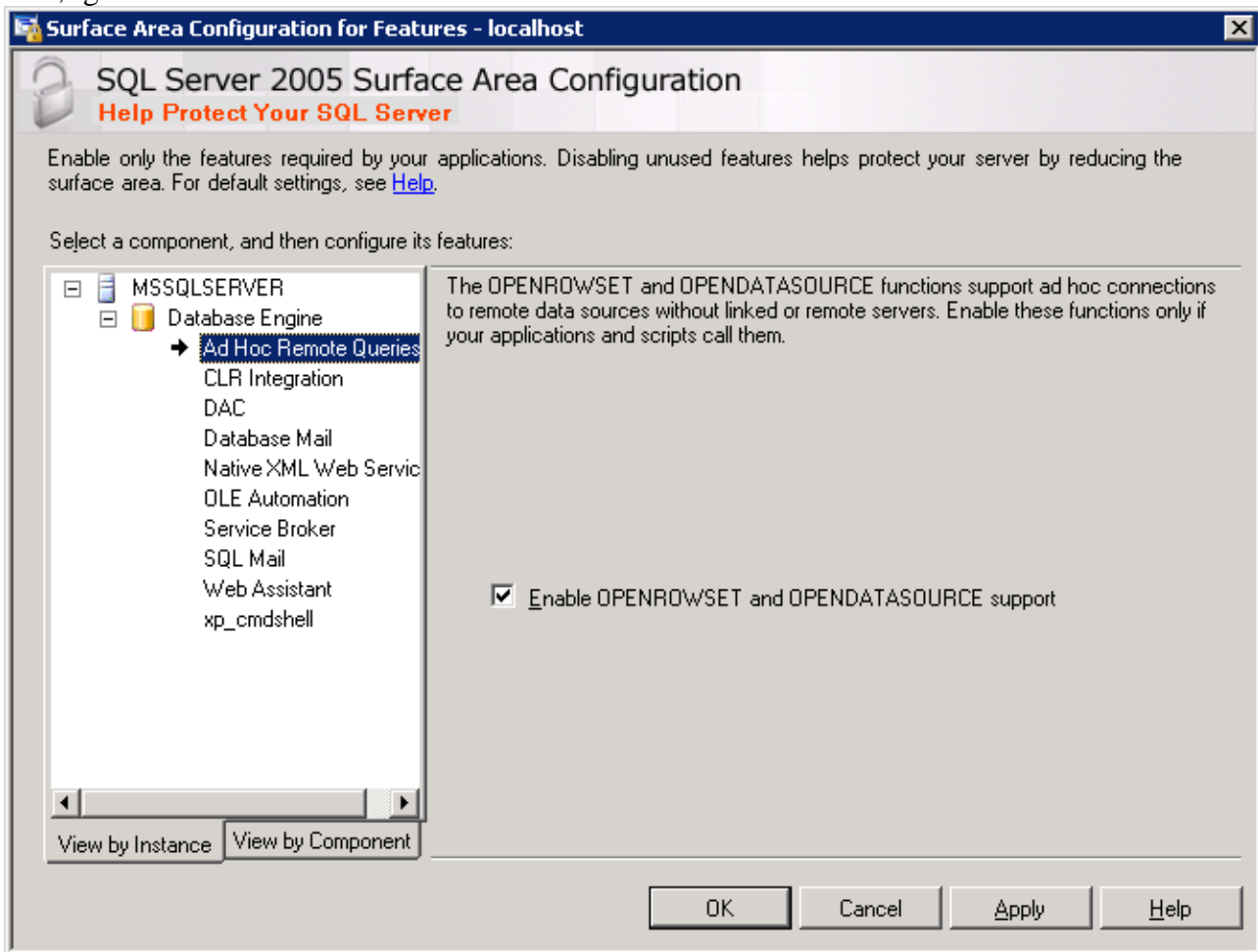
 [Read more about configuring the SQL Server surface area.](#)

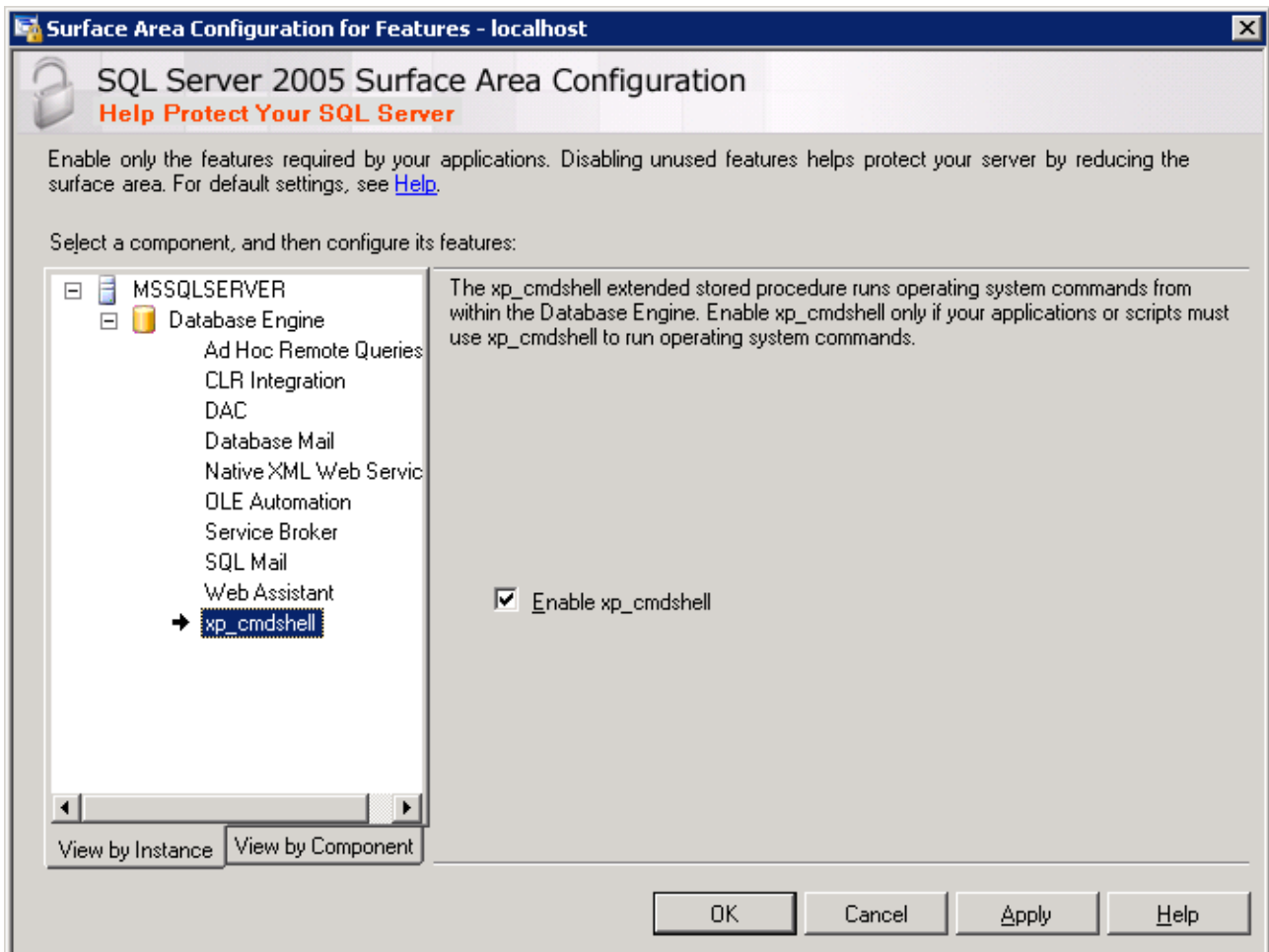
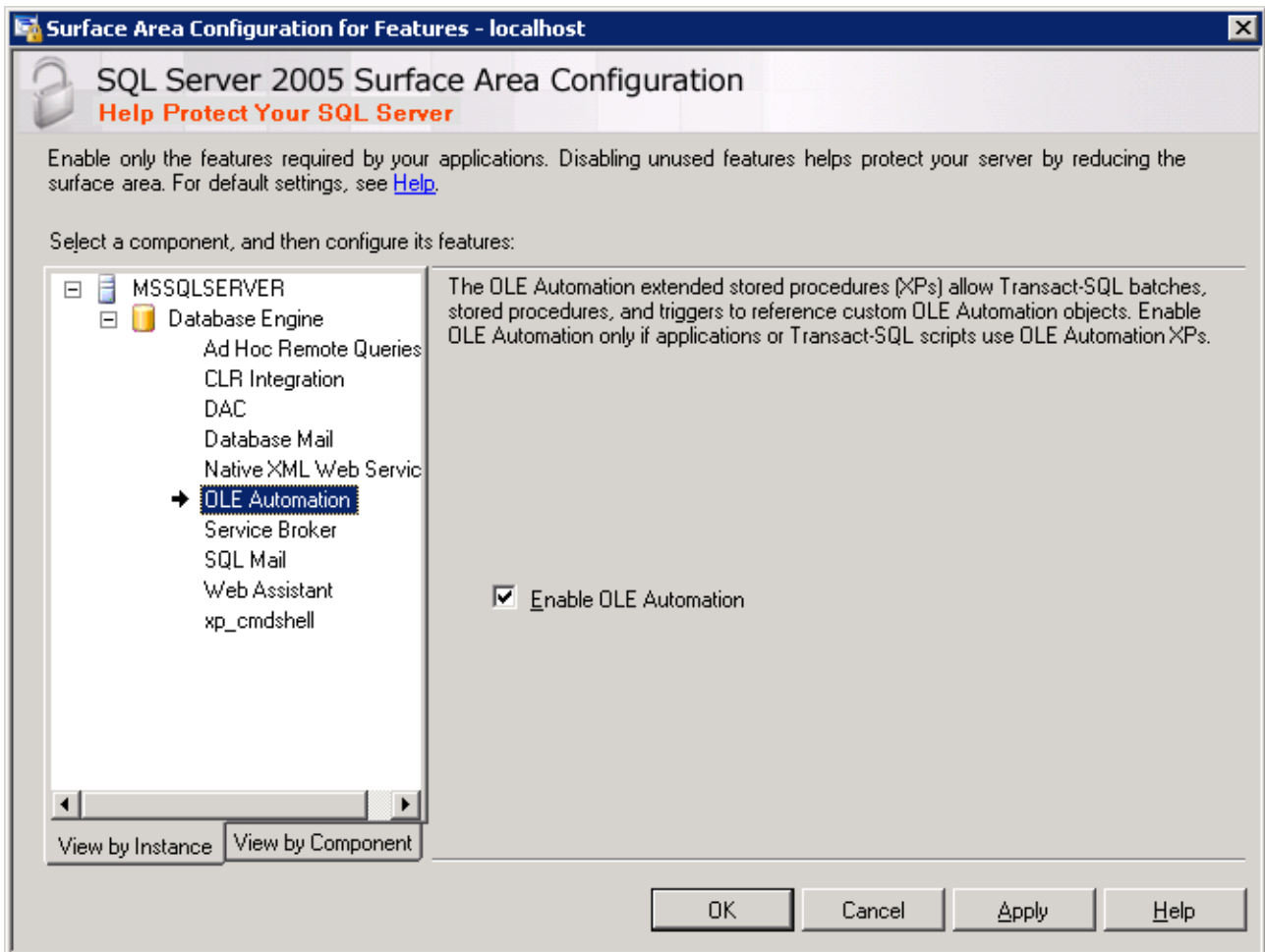
**Configure Surface Area for localhost** [\[change computer\]](#)

 [Surface Area Configuration for Services and Connections](#)

 [Surface Area Configuration for Features](#)

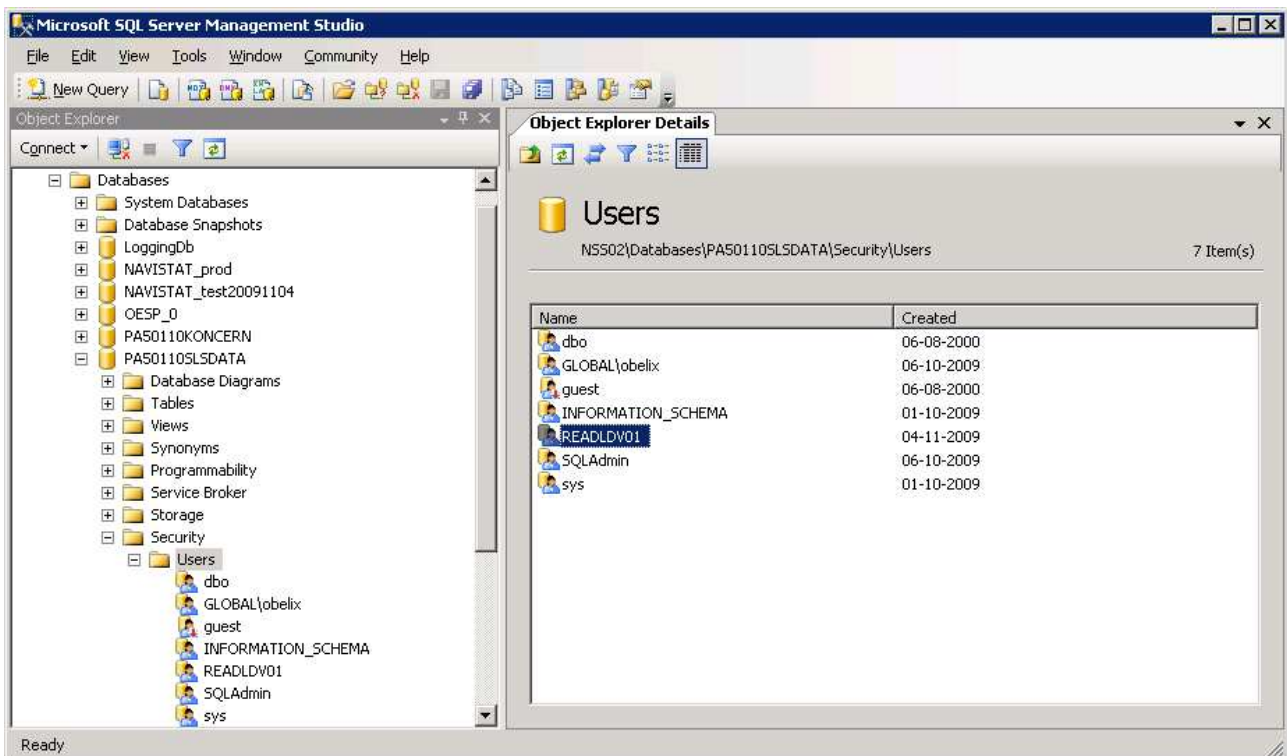
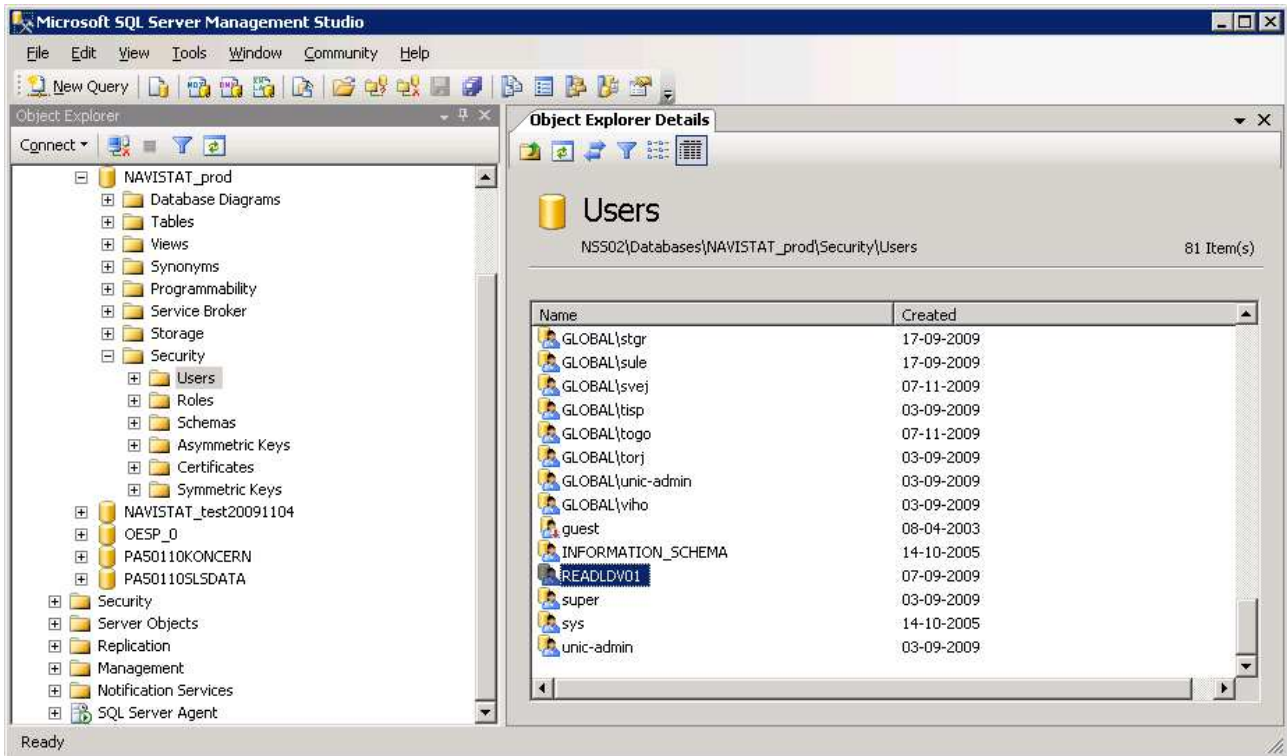
De følgende tre features skal være markeret



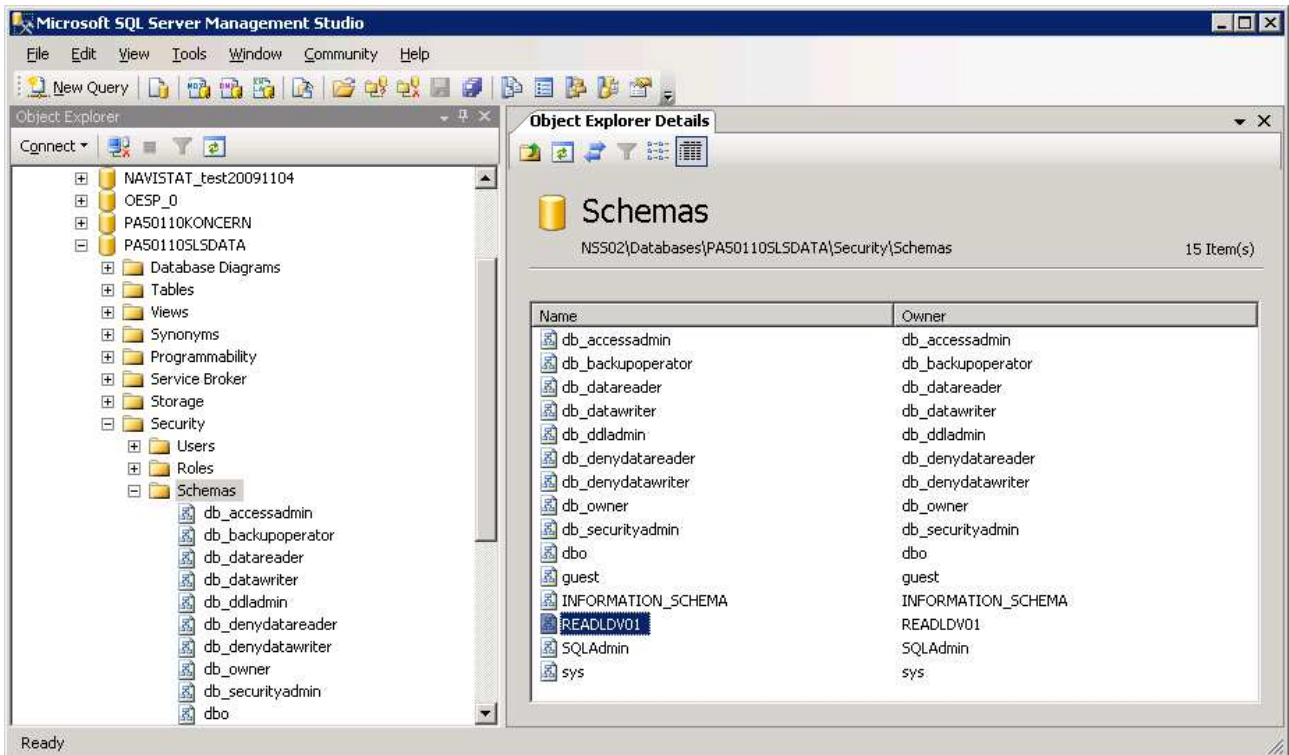
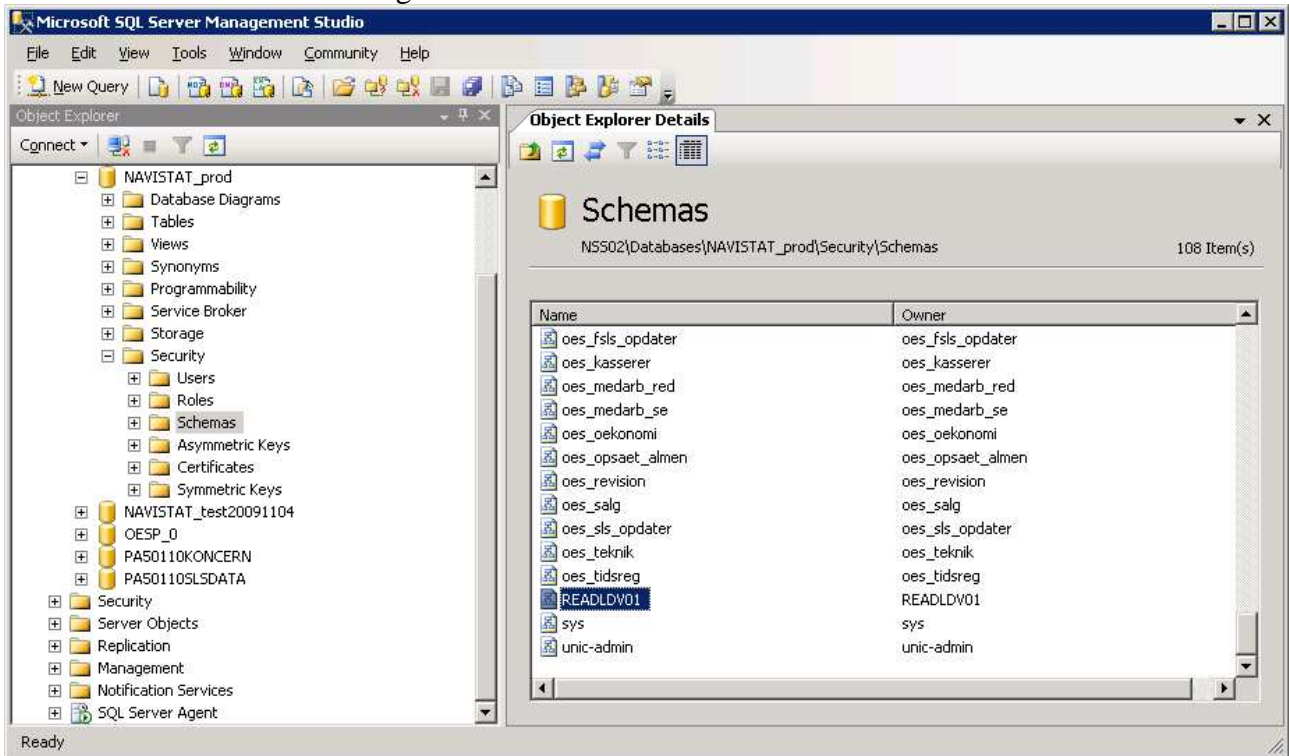


Nemmeste løsning omkring håndtering af READLDV databasebrugeren, er først at slette alle spor af brugeren / brugerne og så oprette brugeren igen.

I SQL Server Management Studio slettes brugeren/brugerne READLDV/readldv under de to databaser NavisionStat og PAxxxxSLSDATA

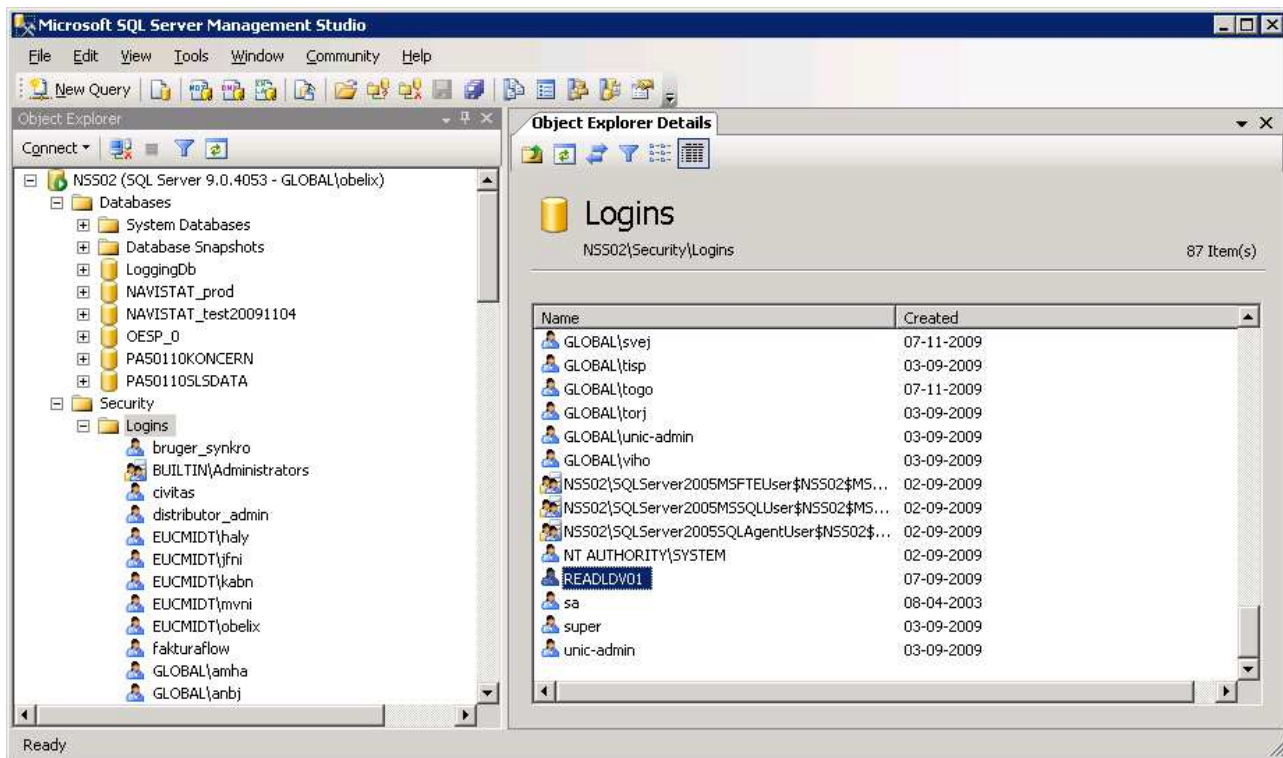


Under de to databaser slettes også Schemas af samme navn/navne.



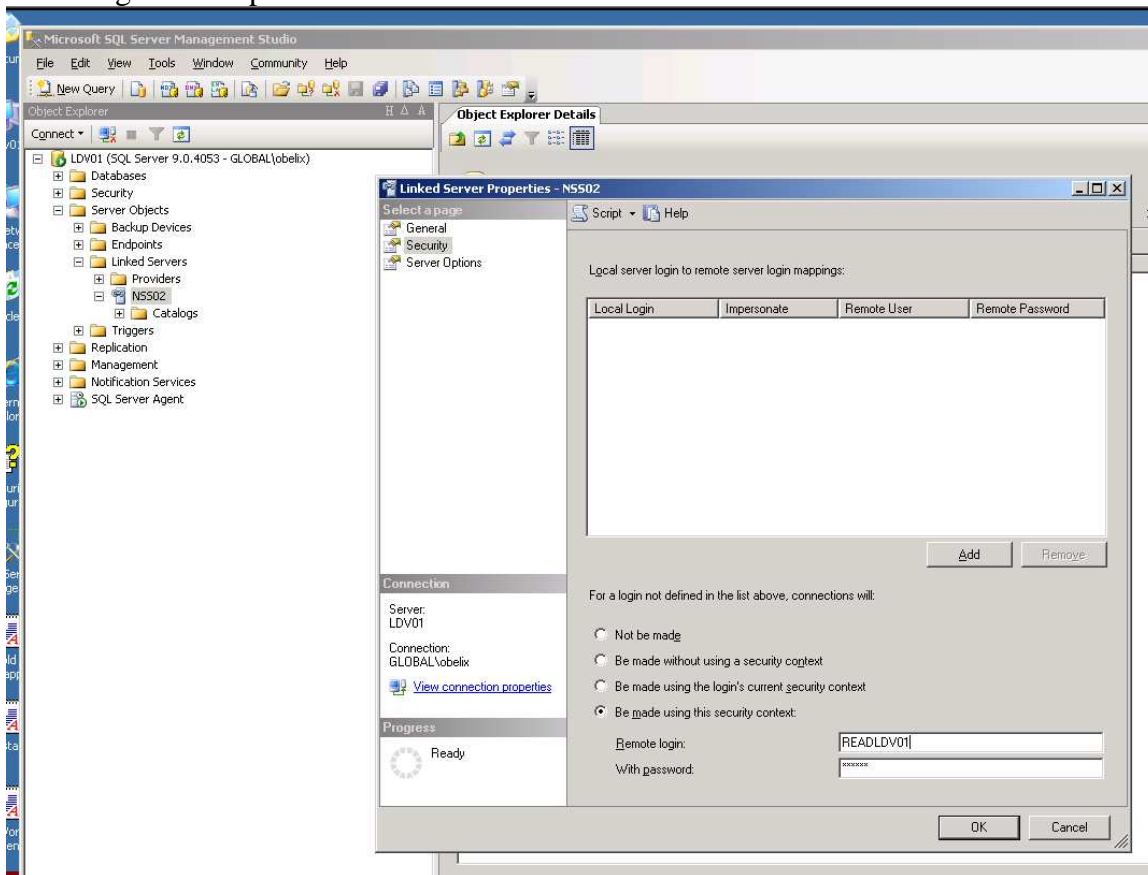
Hvis der er oprettet testregnskaber, slette tilsvarende i disse.

# Brugeren/brugerne READLDV/readldv slettes så under SQL Serverens Security - Logins



Herefter oprettes brugeren med nøjagtig samme navn, som er anvendt på LDV serveren under Linked Servers.

Find brugernavnet på LDV serveren:



Opret brugeren på Navision Stat SQL Serveren med samme password, som anvendt til brugerkontoen på LDV serveren.

**Login - New**

Select a page

- General
- Server Roles
- User Mapping
- Securables
- Status

Script Help

Login name: READLDV Search...

Windows authentication

SQL Server authentication

Password: .....

Confirm password: .....

Specify old password

Old password: \_\_\_\_\_

Enforce password policy

Enforce password expiration

User must change password at next login

Mapped to certificate

Certificate name: \_\_\_\_\_

Mapped to asymmetric key

Key name: \_\_\_\_\_

Default database: master

Default language: <default>

Connection

Server: NSS02

Connection: GLOBAL\obelix

[View connection properties](#)

Progress

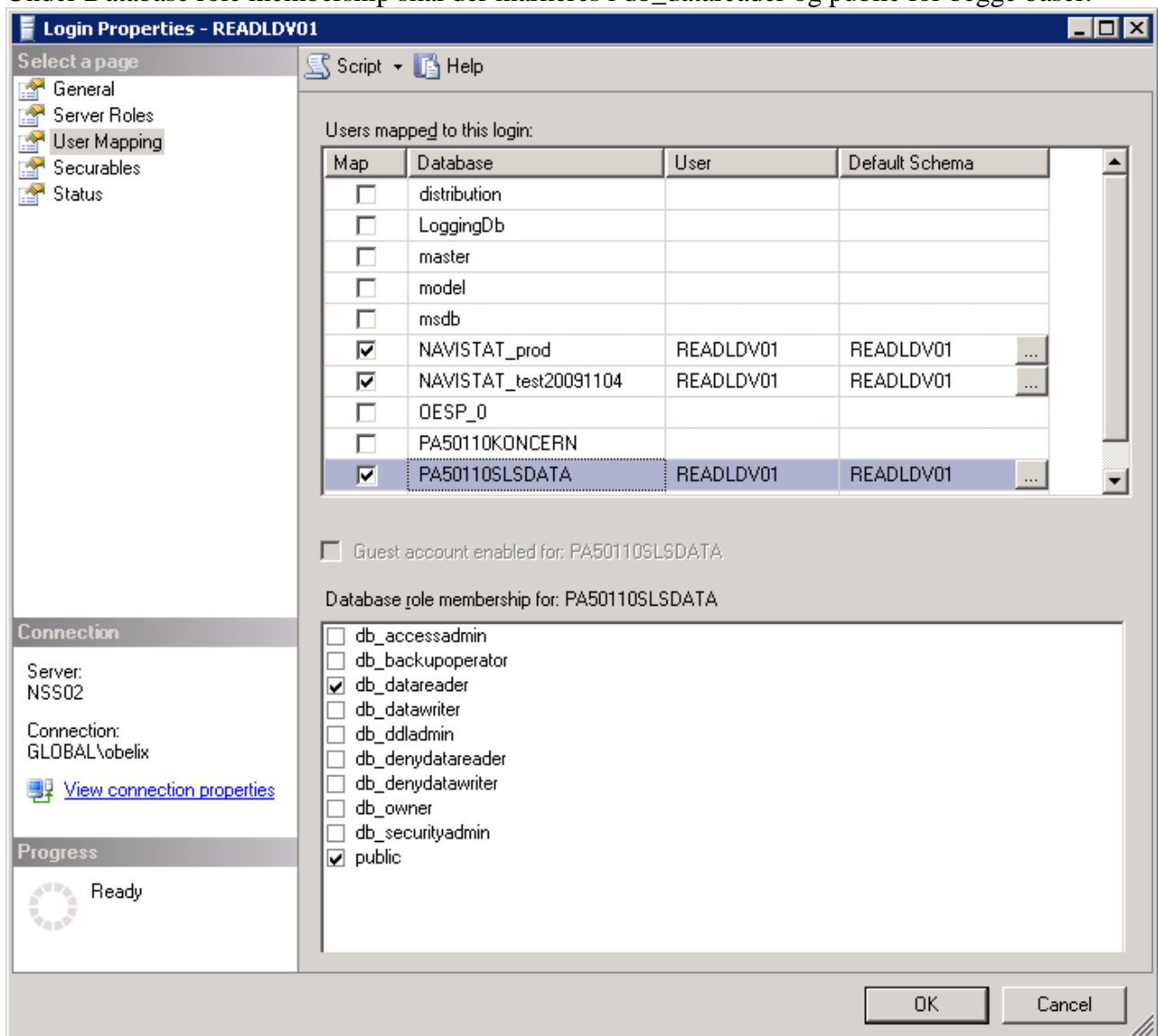
Ready

OK Cancel



Under User Mapping markeres Navision og SLS databaserne og i feltet Default Schema skrives nøjagtig som der står under User

Under Database role membership skal der markeres i db\_datareader og public for begge baser.



Så er der klar til at teste om LDV wizarden nu kører fejlfrit!